

Technical specifications

Item	Technical Specifications
Operating system	SUNMI OS 2.0 (based on Android 7.1)
CPU basic frequency	1.3GHZ four cores
RAM	1GB LPDDR3
FLASH	8GB Nand Flash
Display	5.45 inch IPS, resolution 1440×720
Touch screen	Capacitive two-touch screen
Camera	5M AF / (0.3M FF optional)
Wireless data	2G: 850/1900 3G: B2/B4/B5 4G: B2/B4/B5/B7/B12/B17/B25/B26/B38/B41
Wi-Fi	Build-in Wi-Fi 802.11a/b/g/n(2.4G/5GNODFS)
Bluetooth	Support of bluetooth 4.0
Keys	Power key, volume key
Interfaces	USB Type C, Nano SIM
Printer type	Thermal Printer
Printing paper specifications	Width 58mm, maximum diameter 50mm
Battery	7.6V/2580mAh
Outline dimensions	L 219.1mm ×W 80mm ×H 17.8mm
Adapter	OUTPUT: DC5V/2A INPUT: AC100~240V/0.3A 50/60Hz

RF Exposure Information (SAR) :
This device meets the government's requirements for exposure to radio waves. This device is designed and manufactured not to exceed the emission limits for exposure to radio frequency (RF) energy set by the Federal Communications Commission of the U.S. Government.
The exposure standard for wireless devices employs a unit of measurement known as the Specific Absorption Rate, or SAR. The SAR limit set by the FCC is 1.6 W/kg. *Tests for SAR are conducted using standard operating positions accepted by the FCC with the device transmitting at its highest certified power level in all tested frequency bands.
Although the SAR is determined at the highest certified power level, the actual SAR level of the device while operating can be well below the maximum value. This is because the device is designed to operate at multiple power levels so as to use only the power required to reach the network. In general, the closer you are to a wireless base station antenna, the lower the power output.

CE certification information (SAR)

This device was tested for typical body-worn operations with the back of the handset kept 0mm away. To maintain compliance with RF exposure requirements, use accessories that maintain a 0mm separation distance between the user's body and the back of the handset. The use of belt clips, holsters and similar accessories should not contain metallic components in its assembly. The use of accessories that do not satisfy these requirements may not comply with RF exposure requirements, and should be avoided.
If you are using pacemaker, hearing aid, cochlear implant or other device, please use the phone according to the doctor's advice.

PRODUCT SAFETY WARNINGS

Use responsibly. Read all instructions and safety information before use to avoid injury. The limit operating ambient temperature of the equipment declared by the manufacturer is -10~45°C

Battery safety

Charge battery only at ambient temperatures ranging from 40°C.

(1) CAUTION: Danger of explosion if battery is incorrectly replaced. Replace only with the same or equivalent type of battery recommended by the manufacturer. Dispose of used batteries according to battery manufacturer's instructions.

(2) CAUTION: RISK OF EXPLOSION IF BATTERY IS REPLACED BY AN INCORRECT TYPE. DISPOSE OF USED BATTERIES ACCORDING TO THE INSTRUCTIONS.

(3) CAUTION: Battery charging temperature upper limit is 40°C.

Adapter safety


When charging, please place the device in an environment that has a normal room temperature and good ventilation. It is recommended to charge the device in an environment with a temperature that ranges from 0°C~40°C.
For altitude 2km below use only

Wi-Fi Safety

Turn Wi-Fi off in areas where Wi-Fi use is prohibited or when it may cause interference or danger, such as in airplanes while flying.

Declaration of Conformity



			
BE	BG	CZ	DK
DE	EE	IE	EL
ES	FR	HR	IT
CY	LV	LT	LU
HU	MT	NL	AT
PL	PT	RO	SI
SK	FI	SE	UK

Hereby, Shanghai Sunmi Technology Co., Ltd. declares that the Wireless data POS System(Model No.:T5930) is in compliance with the essential requirements and other relevant provisions of RED 2014/53/EU.

CAUTION: The device is restricted to indoor use when operated in the European Community using frequency in 5150MHz~5250MHz to reduce the potential for interference.

5.8G SRD receiver category: 1

Technical features and characteristic

	Operation Frequency	Transmitted

FCC Statement

Any Changes or modifications not expressly approved by the party responsible for compliance could void the user's authority to operate the equipment.

This device complies with part 15 of the FCC Rules. Operation is subject to the following two conditions:

- (1) This device may not cause harmful interference, and
- (2) This device must accept any interference received, including interference that may cause undesired operation.

Note: This equipment has been tested and found to comply with the limits for a Class B digital device, pursuant to part 15 of the FCC Rules. These limits are designed to provide reasonable protection against harmful interference in a residential installation. This equipment generates, uses and can radiate radio frequency energy and, if not installed and used in accordance with the instructions, may cause harmful interference to radio communications. However, there is no guarantee that interference will not occur in a particular installation. If this equipment does cause harmful interference to radio or television reception, which can be determined by turning the equipment off and on, the user is encouraged to try to correct the interference by one or more of the following measures:
—Reorient or relocate the receiving antenna.
—Increase the separation between the equipment and receiver.
—Connect the equipment into an outlet on a circuit different from that to which the receiver is connected.
—Consult the dealer or an experienced radio/TV technician for help.

Name and content of toxic and harmful substances contained in this product are shown in the following table

Name of parts	Toxic and harmful substances and elements					
	(Pb)	(Hg)	(Cd)	(Cr(VI))	(PBB)	(PBDE)
Circuit board	×	○	○	○	○	○
Shell	○	○	○	○	○	○

○:It indicates that the content of toxic and harmful substances in all homogeneous materials of this part is below the limit specified in SJ/T11363-2006.

×:It indicates that the content of toxic and harmful substances is higher than the limit specified in SJ/T11363-2006 in at least one homogeneous material of this part; however, the the reason why the toxic substance of that part exceeds the limit is that there is no applicable material to replace it currently.

For products that have reached or passed the service years for environmental protection, they should be recycled according to Measures for Control and Management of Electronic Information Products and should not be thrown away at will.

This product can be used across EU member states. The full text of the EU declaration DOC is available at the following internet address: www.sunmi.com

Manufacture

Shanghai Sunmi Technology Co.,Ltd.
Room 505 No.388 Song Hu Road Shanghai, China

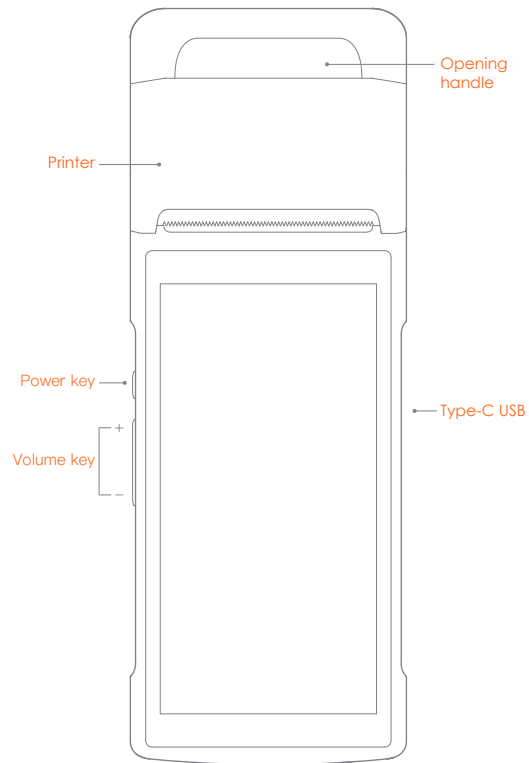
The highest SAR value for the device as reported to worn on the body, as described in this user guide, is 1.2W/kg (Body-worn measurements differ among devices, depending upon available enhancements and FCC requirements.) While there may be differences between the SAR levels of various devices and at various positions, they all meet the government requirement. The FCC has granted an Equipment Authorization for this device with all reported SAR levels evaluated as in compliance with the FCC RF exposure guidelines. SAR information on this device is on file with the FCC and can be found under the Display Grant section of <http://www.fcc.gov/oet/fccid> after searching on FCC ID: 2AH25T6920. For body worn operation, this device has been tested and meets the FCC RF exposure .

List of packaged items

- Terminal device × 1
- User's Guide × 1
- Charger & Adapter × 1
- USB Cable × 1
- _____

Smart POS system
T6920

Product Description



Power key

Short press: wake up the screen, lock the screen.
Long press: long press for 2-3 seconds in power off mode to switch on the device.
Long press for 2-3 seconds in normal operation mode to select power off or reboot.
Long press for 11 seconds when system is frozen for automatic reboot.

Volume key

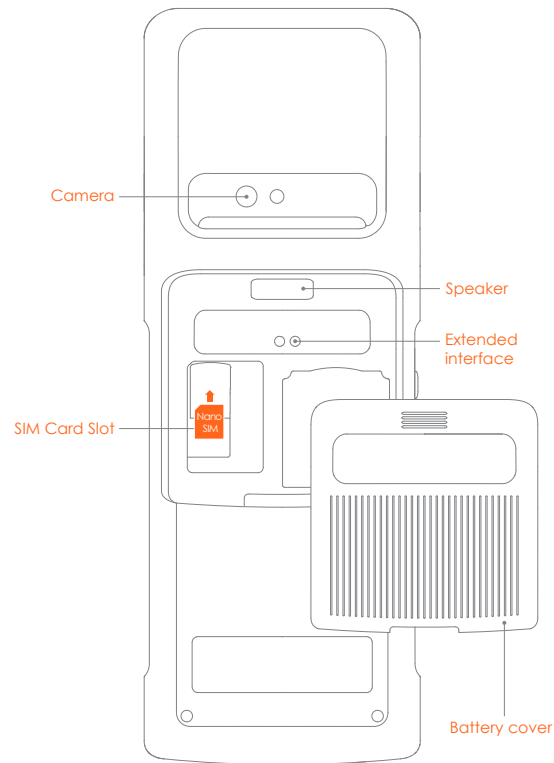
Volume adjustment.

Printer

For printing sales slips in power on mode.

Type-C USB

For device recharging and developer debugging.

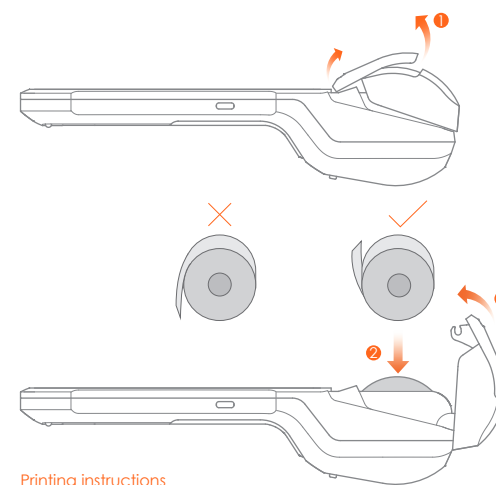


Camera

For payment scanning and 1D/2D code quick scanning.

SIM Card Slot

Note: To prevent system errors, please make sure the device is turned off when you insert or remove the SIM card.

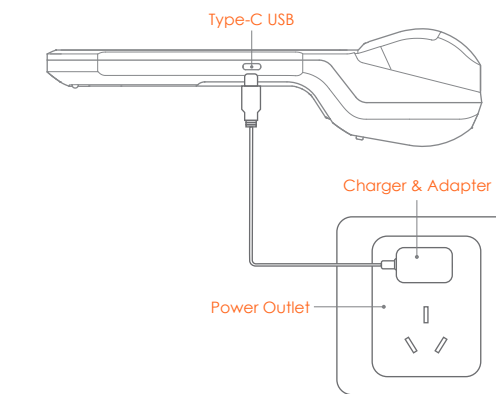


Printing instructions

This device supports 58mm thermal paper with the specifications of 57±0.5mm*Ø50mm

- Please open the paper container with the uncovering handle (as shown in Fig.1). Please do not force open the paper container to avoid print head gear wear;
- Feed the paper correctly into the paper container in the direction as shown, and pull some paper outside the cutter (as shown in Fig.2);
- Close the cover of the paper container to finish printing paper feeding (as shown in Fig.3).

Note: If the printed paper is blank, please check whether the paper roll has been installed in the correct direction.



Instructions for recharging and battery

This device supports charging only by USB cable

- Connect the 5V adapter to the power supply socket;
- Connect the USB cable to the USB interface of the device for recharging;
- The screen will display the recharging icon during the recharging process;
- If the recharging icon does not appear, please check whether the USB interface is well connected.

Instructions/Notes for battery

- This device adopts 7.6V/2580mAh lithium battery; please do not disassemble the battery.
- In order to protect the battery life, we recommend that you recharge the device whenever possible, and please do not allow the battery to fully drain before recharging.

Extremely easy settings

Only a few steps to activate an intelligent business device

- ① Set 2G/3G/4G: when power off, insert the 2G/3G/4G card and then power on. (Refer to the Technical Specifications for the support of cards)
- ② Long press the Power Key for 2~3s to activate the backlight of screen, and then operate following the prompts after entering the startup/booting screen for the first time. 2 modes for accessing the Internet are available.
- ③ Set WiFi
 - Click "Set" button, activate "WLAN" to enter the WLAN searching screen, and wait it to list all useable WLAN

- Click the WLAN to be connected, and enter the access password in case of an encrypted network.

Download/use Apps

After connected to the Internet, open the App Market, find, download and install the Apps.

FAQ

Booting failure (e.g. low battery)

- Plug the USB cable and charge for 3min;
- Check if the screen displays the normal charging status.

System crash

- Long press the Power Key for 11s to reboot.

Read the installed Help App for more information

Precautions

Safety Warning

- Connect the AC plug to the AC socket corresponding to the marked input of the power adapter;
- Do not use in the presence of any potentially explosive gas;
- To avoid injury, unauthorized persons shall not open the power adapter; · This is a Class A product. This product may cause radio interference in living environments. In that case, the user may be required to take adequate measures against interference.
- Battery replacement:
 1. Explosion danger may arise if replacing with the wrong battery!
 2. The replaced battery shall be disposed of by maintenance personnel, and please do not throw it into fire!

Significant Safety Instructions

- This terminal is a handheld device, and the user shall protect the password from being peered at by others while entering the password;
- Do not install or use the device during lightning storms to avoid the potential risks of lightning shock;
- Please turn off the power immediately if you notice abnormal odor, heat or smoke;
- The paper cutter is sharp, please do not touch!

Suggestions

- Do not use the terminal near water or moisture to prevent liquid from falling into the terminal;
- Do not use the terminal in extremely cold or hot environments, such as near flames or lit cigarettes;
- Do not drop, throw or bend the device;
- Use the terminal in a clean and dust-free environment if possible to prevent small items from falling into the terminal;
- Please do not use the terminal near medical equipment without permission.

Statements

The Company does not assume responsibilities for the following actions:

- Damages caused by use and maintenance without complying with the conditions specified in this guide;
- The Company will not assume any responsibilities for the damages or problems caused by optional items or consumables (rather than the initial products or approved products of the Company). The customer is not entitled to change or modify the product without our consent.
- The product's operating system supports official system updates, but if you change the operating system into a third party ROM system or alter the system files by system cracking, it may cause system instability and security risks and threats.

Disclaimer

As a result of product upgrading, some details in this document may not match the product, and the actual product shall govern. The Company reserves the right of interpretation of this document. The Company also reserves the right to alter this specification without prior notice.